

40057

FEB 17 1988

RECEIVED  
LARAMIE COUNTY  
CHEYENNE, WY.

CERTIFIED LAND CORNER RECORDATION FEB 17 AM 11 18 '88

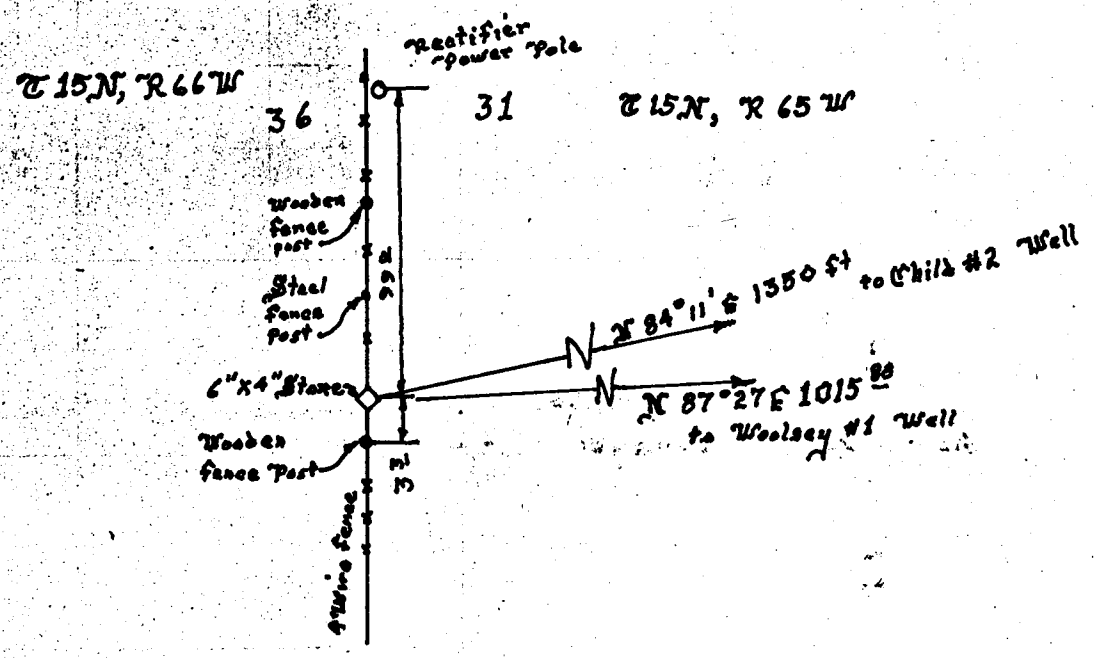
DESCRIPTION OF CORNER EVIDENCE FOUND, AND ORIGINAL RECORD (if known)

Found smooth elliptical cobble stone of granite composition situate beneath a 4 strand barbed wire fence line. This stone lies southerly 99 feet from an electric power rectifier pole and northerly 3.3 feet from a wooden fence post.

DESCRIPTION OF MONUMENT AND ACCESSORIES ESTABLISHED TO PERPETUATE THE ORIGINAL LOCATION OF THIS CORNER:

The stone is a 6"x4" elliptical granite cobble with 1/4 carved on the easterly side, well set. Surrounded said stone with a ring of broken claystone chunks.

SKETCH, WITH COURSE AND DISTANCE TO ADJACENT CORNER IF DETERMINED IN THIS SURVEY. (May Sketch or Paste Reproduction on Reverse Side.)



I, Larry T. Perry L.S. certify that I have carefully performed or reviewed the work done on the diagrammed corner as reported on this recordation form and approve the same.

Larry T. Perry L.S., L.S. 3047  
Signature Surveyor Registration No.

STATE OF WYOMING,  
Office of Clerk and Recorder,  
County of Laramie

This "corner record" was filed for record on the 17 day of February, 1988, was noted on the cross-index plat and is assigned page No. \_\_\_\_\_, in book No. \_\_\_\_\_

Joseph C. Whitcomb  
County Official  
Cross Index No. \_\_\_\_\_ T. \_\_\_\_\_ R. \_\_\_\_\_ Mer. \_\_\_\_\_  
\_\_\_\_\_ T. \_\_\_\_\_ R. \_\_\_\_\_ Mer. \_\_\_\_\_  
\_\_\_\_\_ T. \_\_\_\_\_ R. \_\_\_\_\_ Mer. \_\_\_\_\_  
\_\_\_\_\_ T. \_\_\_\_\_ R. \_\_\_\_\_ Mer. \_\_\_\_\_  
\_\_\_\_\_ T. \_\_\_\_\_ R. \_\_\_\_\_ Mer. \_\_\_\_\_  
\_\_\_\_\_ T. \_\_\_\_\_ R. \_\_\_\_\_ Mer. \_\_\_\_\_

x ~ 25 15 66  
x .1 15 65  
BOOK 1256

1892

3981

01 11 11

### SECTION PLAT SHEET

OWNER \_\_\_\_\_

DATE 15 Dec. 87

SECTION 31

TOWNSHIP 15 N

RANGE 65 W

COUNTY Laramie

STATE Wyo

SCALE \_\_\_\_\_

25			30		29
36					32
ML 998	ML 998				
N 15 N	N 51 2				

	31					36	
1	6					1	6
36	31					36	31
	6					1	

---

---

---

---

---

---

---

---

---

---